



IDEA FOR EXCAVATOR ATTACHMENT





ABOUT US

IDEA FOR EXCAVATOR ATTACHMENT

DOPRO is a professional manufacturer committed to the design and production of Hydraulic Breaker and Attachments

Whether your job is breaking down concrete surfaces, trenching, or preventing blockage in crushing systems, DOPRO is made to withstand continuous breaking in harsh environments.

We DOPRO use only high quality raw materials to produce superior product and all the manufacturing process such as heat treatment, forging, machining, grinding and etc, are strictly controlled by qualified and experienced engineers in our factory with computerized and latest facilities.

All parts are thoroughly inspected at every time that each process such as cutting, heat treatment, machining, grinding, cleaning, assembly, etc. is carried out, and all inspection data per each production lot are maintained and controlled so as to be utilized as data for better qualities and performance improvement.

Major parts such as piston cylinder and etc are designed for outstanding durability through structure analyses, and mass production is started only when a proto type has been completely

COMPANY

We are group company -Professional manufacturer of Excavator Attachment for more than 10 years, with 3 factory totally, one for Excavator attachment, one for Hydraulic Breaker, one for Spare parts. Total size more than 8,500 square meters. we are leading manufacturer in China domestic market, Now we are officially developing into overseas markets. and we have successfully expanded our business to all the world countries. from Asia to Europe, USA, Latin America, Oceania...

Our related series products include Hydraulic Breaker, Quick Hitch Coupler, Hydraulic Compactor, Hydraulic Grapple, Hydraulic Crusher, Thumb Bucket, Wood Grapple, Pile Hammer, Hydraulic Vibrating Ripper, Hydraulic Shear, Ripper, excavator parts, etc, We have all kinds of production equipment.

DO PROFESSIONAL EXCAVATOR ATTACHMENT MANUFACTUER



CONTENTS

Breaker Features & System	6 ~ 7
Side Type Breaker	8 ~ 9
Top Type Breaker	10 ~ 11
Box Type Breaker	12 ~ 13
Skid-Steer loaders Series	14
Backhole loaders Series	15
HB Type Breaker	16
Spare Parts	17
MONOBLOCK HAMMER	20
EXPLOSIVE HYDRAULIC BREAKER	21
PORTABLE IMPACTOR VIBRATING	22
RIPPER	23
Quick Hitch Coupler	25
S Hitch Coupler	26
Tiltrotator	27
AU Compactor	28
Compactor	29
Hydraulic Scrap Shear	30
Crusher	31
Pulverizer	32

ONE STOP SOLUTION FOR EXCAVATOR ATTACHMENT

33	Bucket Grapple
34	Wood Grapple
35	Pile Hammer
36	Log Grab
37	Clam Shell Bucket
38	Orange Peel
39	Sorting Grab
40	Ripper
41	Tilt Bucket
42	Drum Cutter
43	Skeleton Bucket
44-45	Earth Auger
46	Screening Bucket/Rake
47	Crushing Bucket/Fail Mower
48	Thee Root Shear
49	Thee Shear

POWERFUL HYDRAULIC BREAKER

Back Head

The hydraulic parts [pressure and return] and the nitrogen [N₂] gas chamber are built into the backhead.

Valve

The control valve is the brain of the hammer. A light weight shuttle valve controls the piston recip-rocation.

Accumulator

As a damper for surged high pressure, it's for protecting pump output of base machine.

Throught Bolt

The three major parts of the breaker, the front head, cylinder and back-head, are resecured by four [4] through bolts.

Cylinder

Easy and lowest maintenance cost due to mini- mized parts.

Piston

This is the core of hammer, The piston creates kinetic energy during the operation of the breaker.

Front Head

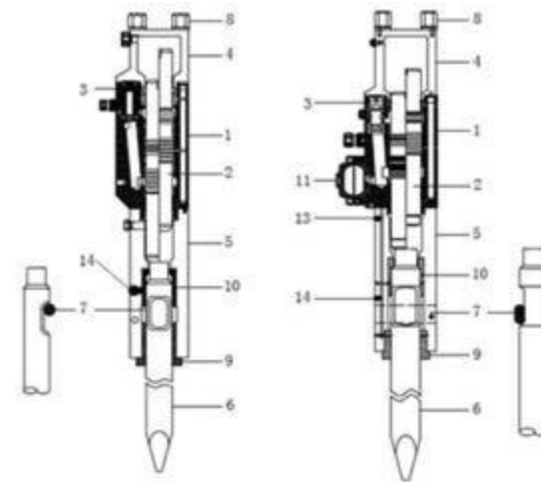
The fronthead is maintained by the replaceable thrust bush and ring.

Tool

The working tool guarantees excellent performance and economical efficiency.

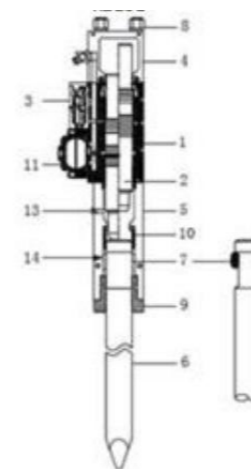
INTERNAL VALVE TYPE

Internal valve model: DPSB/TB/BB 400~1750



EXTERNAL VALVE TYPE

External valve model: DPHB15G~DPHB40G



SIDE TYPE BREAKER

APPLICATION

- Used for mining, demolition, construction, quarry etc
- It can be mounted on all common hydraulic excavator as well as mini excavator and other carrier like skid steer loader, backhoe loader, crane, telescopic handler, wheel loader and other machinery



SPECIFICATION

MODEL	DESCRIPTION	DPSB400	DPSB450	DPSB530	DPSB680	DPSB750	DPSB1000
Suitable Excavator	Min ton	0.8	1.2	2.5	4	6	11
	Max ton	2.5	3	4.5	7	9	16
Tool (Moil Type)	Weight Kg	4	5	8	17	21	50
	Diameter mm	40	45	53	68	75	100
Operating Weight (Tool + M/C)	Kg	70	90	120	250	380	765
	lb	158	200	330	605	649	1749
Height	mm	972	1071	1147	1349	1618	1934
Operating Pressure (Breaker)	bar	90 ~ 120	90 ~ 120	90 ~ 120	110 ~ 140	120 ~ 150	150 ~ 170
	psi	1,160 ~ 1,450	1,160 ~ 1,450	1,305 ~ 1,740	1,377 ~ 1,885	1,450 ~ 2,030	2,175 ~ 2,465
Setting Pressure (Machine)	bar	150	150	150	170	180	200
	psi	2175	2175	2175	2465	2610	2900
Impact Rate	bpm	800 ~ 1,400	700 ~ 1,200	600 ~ 1,100	500 ~ 900	400 ~ 800	350 ~ 700
Back Head Pressure (N2-Gas)	bar/psi	14/203	14/203	16/232	16/232	16/232	16/232
Required Oil Flow	l/min	15 ~ 30	20 ~ 40	25 ~ 50	40 ~ 70	50 ~ 90	80 ~ 110

* Above specifications are subject to change without prior notice for improvement in quality.

FEATURE & BENEFITS

- Parts exchanging quickly. Flexible operation with wide vision saving with higher efficiency.
- Noisier than the Silent type but less overall weight makes and it for easier positioning suitable for mining work.
- With best design, manufactured by least number of components. With fewer accessories, lower faults, easy to maintain.



SPECIFICATION

MODEL	DESCRIPTION	DPSB1350	DPSB1400	DPSB1500	DPSB1550	DPSB1650	DPSB1750
Suitable Excavator	Min ton	16	18	25	28	30	40
	Max ton	21	26	30	35	40	55
Tool (Moil Type)	Weight Kg	120	135	150	190	225	250
	Diameter mm	135	140	140	155	165	175
Operating Weight (Tool + M/C)	Kg	1462	1740	2144	2413	2650	3857
	lb	3190	3916	3916	5940	6589	9020
Height	mm	2295	2429	2623	2776	2953	3189
Operating Pressure (Breaker)	bar	160 ~ 180	160 ~ 180	160 ~ 180	160 ~ 180	160 ~ 180	160 ~ 180
	psi	2,320 ~ 2,610	2,320 ~ 2,610	2,320 ~ 2,610	2,320 ~ 2,610	2,276 ~ 2,702	2,276 ~ 2,845
Setting Pressure (Machine)	bar	210	210	210	220	240	240
	psi	3045	3045	3045	3190	3480	3480
Impact Rate	bpm	350 ~ 600	350 ~ 500	300 ~ 450	300 ~ 450	250 ~ 400	150 ~ 350
Back Head Pressure (N2-Gas)	bar/psi	16/232	16/232	16/232	16/232	17/246	18/261
Required Oil Flow	l/min	100 ~ 150	120 ~ 180	150 ~ 210	180 ~ 240	200 ~ 260	210 ~ 290

*Above specifications are subject to change without prior notice for improvement in quality.

TOP TYPE BREAKER

APPLICATION

- Used for mining, demolition, construction, quarry etc
- It can be mounted on all common hydraulic excavator as well as mini excavator and other carrier like skid steer loader , bachoe loader, crane, telescopic handler, wheel loader and other machinery



SPECIFICATION

MODEL	DESCRIPTION	DPTB400	DPTB450	DPTB530	DPTB680	DPTB750	DPTB1000
Suitable Excavator	Min ton	0.8	1.2	2.5	4	6	11
	Max ton	2.5	3	4.5	7	9	16
Tool (Moil Type)	Weight Kg	4	5	8	17	21	50
	Diameter mm	40	45	53	68	75	100
Operating Weight (Tool + M/C)	Kg	90	110	135	273	304	516
	lb	165	190	353	714	838	1874
Height	mm	1150	1254	1313	1602	1869	2358
Operating Pressure (Breaker)	bar	90~120	90~120	90~120	110~140	120~150	150~170
	psi	1,305~1,740	1,305~1,740	1,305~1,740	1,595~2,030	1,740~2,175	2,175~2,465
Setting Pressure (Machine)	bar	150	150	150	170	180	200
	psi	2175	2175	2175	2465	2610	2900
Impact Rate	bpm	800~1,400	700~1,200	600~1,100	500~900	400~800	350~700
Back Head Pressure (N2-Gas)	bar/psi	14/203	14/203	16/232	16/232	16/232	16/232
Required Oil Flow	l/min	15~30	20~40	25~50	40~70	50~90	80~110

*Above specifications are subject to change without prior notice for improvement in quality.

FEATURE & BENEFITS

- Noisier than the Slient type but less overall weight makes and it for easier positioning.
- Easy-control and easy-position make it more convenient to excavation work Without side wight, reducing the rate of chisel breakage.
- Parts exchanging quickly and Longer operation range for distance working More powerful cause of body verticality.



SPECIFICATION

MODEL	DESCRIPTION	DPTB1350	DPTB1400	DPTB1500	DPTB1550	DPTB1650	DPTB1750
Suitable Excavator	Min ton	16	18	25	28	30	40
	Max ton	21	26	30	35	40	55
Tool (Moil Type)	Weight Kg	120	135	150	190	225	250
	Diameter mm	135	140	150	155	165	175
Operating Weight (Tool + M/C)	Kg	1450	1780	2100	2700	2995	4100
	lb	3968	4453	4453	5820	7055	11089
Height	mm	2691	2828	3055	3215	3395	3736
Operating Pressure (Breaker)	bar	160~180	160~180	160~180	160~180	160~180	160~180
	psi	2,320~2,610	2,320~2,610	2,320~2,610	2,320~2,610	2,320~2,610	2,320~2,610
Setting Pressure (Machine)	bar	210	210	210	220	240	240
	psi	3045	3045	3045	3190	3480	3480
Impact Rate	bpm	350~600	350~500	300~450	300~450	250~400	150~350
Back Head Pressure (N2-Gas)	bar/psi	16/232	16/232	16/232	16/232	17/246	18/261
Required Oil Flow	l/min	100~150	120~180	150~210	180~240	200~260	210~290

*Above specifications are subject to change without prior notice for improvement in quality.

BOX TYPE BREAKER

APPLICATION

- Used for mining, demolition, construction, quarry etc
- It can be mounted on all common hydraulic excavator as well as mini excavator and other carrier like skid steer loader, backhoe loader, crane, telescopic handler, wheel loader and other machinery



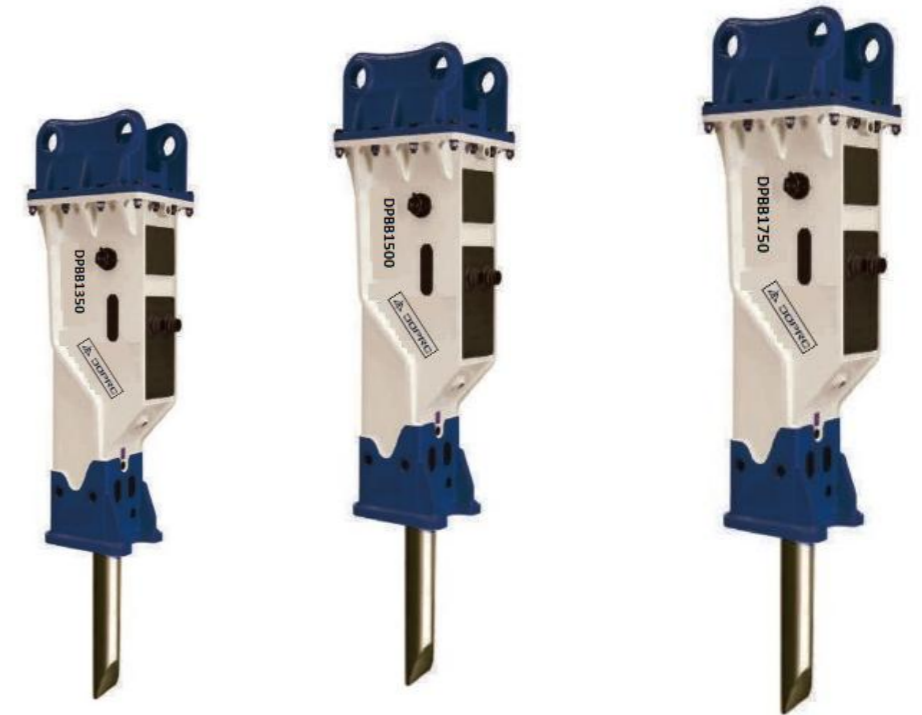
SPECIFICATION

MODEL	DESCRIPTION	DPBB400	DPBB450	DPBB530	DPBB680	DPBB750	DPBB1000
Suitable Excavator	Min ton	0.8	1.2	2.5	4	6	11
	Max ton	2.5	3	4.5	7	9	16
Tool (Moil Type)	Weight Kg	4	5	8	17	21	50
	Diameter mm	40	45	53	68	75	100
Operating Weight (Tool + M/C)	Kg	102	126	152	295	375	861
	lb	226	280	337	655	832	1911
Height	mm	1135	1213	1317	1620	1899	2316
Operating Pressure (Breaker)	bar	90 ~ 120	90 ~ 120	90 ~ 120	110 ~ 140	120 ~ 150	150 ~ 170
	psi	1,305 ~ 1,740	1,305 ~ 1,740	1,305 ~ 1,740	1,595 ~ 2,030	1,740 ~ 2,175	2,175 ~ 2,465
Impact Rate	bpm	800 ~ 1,400	700 ~ 1,200	600 ~ 1,100	500 ~ 900	400 ~ 800	350 ~ 700
Back Head Pressure (N2-Gas)	bar/psi	14/203	14/203	16/232	16/232	16/232	16/232
Required Oil Flow	l/min	15 ~ 30	20 ~ 40	25 ~ 50	40 ~ 70	50 ~ 90	80 ~ 110

*Above specifications are subject to change without prior notice for improvement in quality.

FEATURE & BENEFITS

- Noise level is highly reduced by the closed structure.
- Full-closed bracket protects main body from damage.
- Lower noise for city projects, comfortable operation and Longer operating range for distance working, reducing maintenance cost.



SPECIFICATION

MODEL	DESCRIPTION	DPBB1350	DPBB1400	DPBB1500	DPBB1550	DPBB1650	DPBB1750
Suitable Excavator	Min ton	16	18	25	28	30	40
	Max ton	21	26	30	35	40	55
Tool (Moil Type)	Weight Kg	120	135	150	190	225	250
	Diameter mm	135	140	150	155	165	175
Operating Weight (Tool + M/C)	Kg	1500	1766	2071	2632	3015	3991
	lb	3330	3920	4598	5843	6693	8658
Height	mm	2682	2813	3063	3215	3395	3736
Operating Pressure (Breaker)	bar	160 ~ 180	160 ~ 180	160 ~ 180	160 ~ 180	160 ~ 180	160 ~ 180
	psi	2,320 ~ 2,610	2,320 ~ 2,610	2,320 ~ 2,610	2,320 ~ 2,610	2,276 ~ 2,610	2,276 ~ 2,610
Impact Rate	bpm	350 ~ 600	350 ~ 500	300 ~ 450	300 ~ 450	250 ~ 400	200 ~ 350
Back Head Pressure (N2-Gas)	bar/psi	16/232	16/232	17/246	17/246	18/261	25/362
Required Oil Flow	l/min	100 ~ 150	120 ~ 180	150 ~ 210	180 ~ 240	200 ~ 260	210 ~ 290

* Above specifications are subject to change without prior notice for improvement in quality.

SKID-STEER LOADER SERIES

APPLICATION

- Used for mining, demolition, construction, quarry etc
- It can be mounted on all common hydraulic excavator as well as mini excavator and other carrier like skid steer loader, backhoe loader, crane, telescopic handler, wheel loader and other machinery

FEATURE & BENEFITS

- High impact energy & Low noise level
- High performance ability
- Low maintenance cost
- Universal mounting frame



SPECIFICATION

DESCRIPTION	UNIT	DPSL450	DPSL530	DPSL680	DPSL750
Operating Weight	kg / lbs	190 / 419	280 / 617	382 / 842	475 / 1,047
Tool Diameter	mm/inch	45 / 1.77	53 / 2.09	67 / 2.68	75 / 2.95
Impact Rate	bpm	700~1,200	550~1,000	500~950	450~1,000
Operating Pressure	bar / psi	80~100 / 1,160~1,450	90~120 / 1,305~1,740	95~130 / 1,378~1,885	100~130 / 1,450~1,885
Setting Pressure	bar / psi	130 / 1,885	150/2,175	160/2,320	160 / 2,320
Back Head Pressure	bar / psi	12 / 74	16 / 232	16 / 232	16 / 232
Required Oil Flow	lpm	15~25	25~40	30~60	40~90
Noise Level	LPA	85	87	87	88
Suitable Excavator	-	1.2-3	2.5-4.5	4-7	6-9

* Above specifications are subject to change without prior notice for improvement in quality.

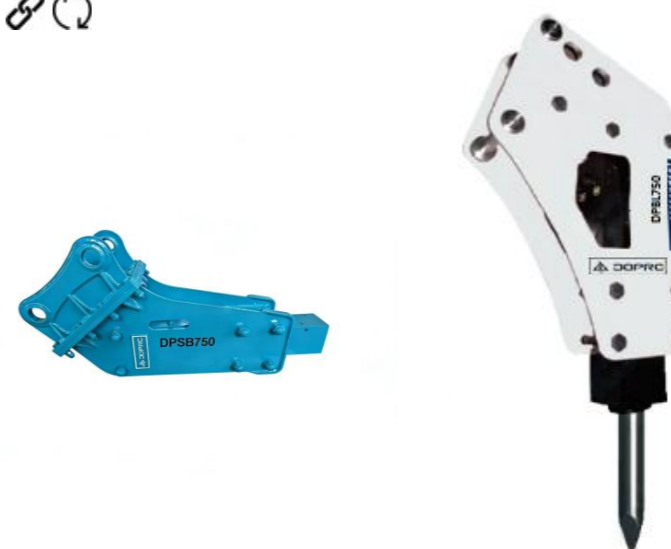
BACKHOE LOADER SERIES

APPLICATION

- Used for mining, demolition, construction, quarry etc
- It can be mounted on all common hydraulic excavator as well as mini excavator and other carrier like skid steer loader, backhoe loader, crane, telescopic handler, wheel loader and other machinery

FEATURE & BENEFITS

- High performance ability with anti-wear resistance
- High efficient work by optimized control valve



SPECIFICATION

DESCRIPTION	UNIT	DPBL680/DPBL680T	DPBL750/DPBL750T
Operating Weight	kg / kg	247 / 289	341 / 392
Tool Diameter	mm	68 / 68	75 / 75
Impact Rate	bpm	500-900	400-800
Operating Pressure	bar / psi	110-140	120-150
Carrier Weight	Ton	4-7	6-9
Height	mm	1459/ 1677	1677 /1736
Required Oil Flow	lpm	40-70	50-90
Suitable Excavator	-	4-7	6-9

* Above specifications are subject to change without prior notice for improvement in quality.

HB TYPE BREAKER

APPLICATION

- Used for mining, demolition, construction, quarry etc
- It can be mounted on all common hydraulic excavator as well as mini excavator and other carrier like skid steer loader , backhoe loader, crane, telescopic handler, wheel loader and other machinery

FEATURE & BENEFITS

- Less Overall weight & Easy-control & Easy -position
- High performance ability
- Low maintenance cost
- Universal mounting frame



SPECIFICATION

DESCRIPTION	UNIT	DPHB15G	DPHB20G	DPHB30G	DPHB40G
Operating Weight	kg	1300	1920	2520	3480
Tool Diameter	mm	120	135	150	160
Impact Rate	bpm	400~525	400~550	350~450	300~350
Operating Pressure	mpa	16~18	14.5~18	14.5~18	16~18
Overall Length	mm	2115	2257	2680	2886
Applicable carrier weight	Ton	15-19	19-22	26-32	32-44
Required Oil Flow	L/min	120~155	125~160	160~2100	200~250
Valve Assy Position	-	Internal	Internal	Internal	Internal

*Above specifications are subject to change without prior notice for improvement in quality.

SPARE PARTS

- Choose the high quality special alloy steel, precise digital control machining and special multi-heat treatment.
- Excellent composite mechanical function, high hardness and high impacting toughness.
- Long life, high reliability, the wear resistant chisels are not easy to be broken.
- Suit various working conditions, embody the high cost performance perfectly.



<p>CYLINDER</p>	<p>FRONT HEAD</p>	<p>BACK HEAD</p>	<p>THROUGH BOLT</p>
<p>SIDE BOLT</p>	<p>BUSH</p>	<p>MAINVAIVE ASS'Y</p>	<p>ACCUMULATOR, DIAPHRAGM</p>
<p>PISTON</p>	<p>ROD PIN</p>	<p>MAIN BODY ASS'Y</p>	<p>SEAL KIT</p>

Powerful Hydraulic Breaker WIDER CARRIER RANGE



301.C 301.8C	PC05-1/5 PC05-6	SOLAR007 SOLAR010	ROBEX15	EX8 EX12 EX15 UE10	EC14/15B	SWE08	ZE15E	
302.5C	PC05 PC07-2	SOLAR007 SOLAR010	ROBEX28	EX8/EX12 EX1/EX18 UE10/UE12 UE15/UE20 EC22	EC20B	SWE17 SWE18	ZE15E	15
303C CR 303.5C CR	PC10 PC12 PC15 PC20 PC27	DH30 DSL602 SOLAR30 SOLAR035	ROBEX35	EX25 EX27 EX30 EX33 EX34 UE30	EC30 EC25 EC35 ZL302	SWE30 SWE40		35
205 206	PC40 PC45 PC50 PC60	DH55 DH60	RB55-7 RB60-7	ZX60 ZX60W	EC55	SWE40 SWE50 SWE60 SWE70 SWE80	ZE60E-1	50 55
	PC45 PC50 PC60			ZX60 ZX60W	YC65	SWE60 SWE70 SWE80	ZE85E	60
212 213 214 E110	PC120 PC150 PW150	DH130 DH130W DH150 DH170	RB130-7 RB175	ZX100 ZX130W ZX150 ZX100WD ZX160WD	EC120 EC140	SWE90 SWE125 SWE130 SWE150	ZE150E	161 185
E200B 320C 322	PC200 PC220 PW210	DH220 DH225	RB200 RB210 R215	ZX200 ZX210 ZX220 ZX270	EC210	SWE230	ZE205E ZE210E ZE230E ZE260E	
219 320 322 325 320C	PC200 PC220	DH220 DH225 DH258	R220 R205-7 R225	ZX210 ZX220 ZX230 ZX240 ZX270	EC210 EC240	SWE230	ZE205E ZE210E ZE230E ZE260E	
219 320 322 325 320C	PC200 PC220	DH220 DH225 DH258	R220 R205-7 R225	ZX210 ZX220 ZX230 ZX240 ZX270	EC210 EC240	SWE230	ZE205E ZE210E ZE230E ZE260E	
330 220 225 239 E300 329	PC250 PC300	DH300	R360 R290 R420	ZX300 ZX330 ZX350	EC290	SWE330	ZE330E	
335 330L E450 235C	PC400	DH360 DH420 DH500	R420 R450	ZX360 ZX400	EC360 EC460	SWE330	ZE360E	
E450 235C	PC400	DH420 DH500	R420 R450	ZX400	EC460	SWE470		

* Above specifications are subject to change without prior notice for improvement in quality.



	SK035	40						
LG660 LG665	SK60	40 60	SY55C-9 SY60C-9 SY65C-9	YC35 YC55 YC65	CLG904 CLG905 CLG907	JCM906D GC60	45	22129
LG685 LG690	SK60	60 70 80	SY65C-9 SY75C-9			JCM908D JC78 JCM907D GC88	60 65	60-8
LG6150E	SK100 SK120	150	SY135C-8 SY155H	YC135		JCM916D GC138 JCM913D MC136-9	170	140-8
	SK200 SK220 SK200E SK210E SK220E SK230E	210 220	SY185C-8 SY195C-9 SY205C-9 SY215C-9 SY225C-9 SY235C-9		CLG200 CLG920	JCM924D JCM922D JCM921D GC228LC-8 GC208-8 GC258LC-8	220	210LC-8 230LC-7B
LG6210E LG6225E LG6250E	SK220 SK230 SK250	220 240 250	SY185C-8 SY195C-9 SY205C-9 SY215C-9 SY225C-9 SY235C-9		CLG210 CLG230 CLG920 CLG923 CLG925	JCM924D JCM922D JCM921D GC228LC-8 GC208-8 GC258LC-8	230 240 260	230LC-7B 240LC-8
LG6210E LG6225E LG6250E	SK220 SK230 SK250	220 240 250	SY185C-8 SY195C-9 SY205C-9 SY215C-9 SY225C-9 SY235C-9		CLG210 CLG230 CLG920 CLG923 CLG925	JCM924D JCM922D JCM921D GC228LC-8 GC208-8 GC258LC-8	230 240 260	230LC-7B 240LC-8
LG6300E	SK300 SK320 SK330 SK350	330	SY285C-9 SY305C-9H SY335C-9 SY335C-9H SY365C-8			JCM933D GC338LC-8		330LC-8
LG6360E	SK400 SK430 SK450	370	SY335C-9 SY335C-9H SY365C-8 SY365H-8 SY385H-8 SY358C			MC386LC-8 GC378LC-8 GC458LC-8 GC378		330LC-8
LG6360E	SK430 SK450		SY465H-8			MC386LC-8 GC378LC-8 GC458LC-8 GC498LC-8		450LC-8

* Above specifications are subject to change without prior notice for improvement in quality.



MONOBLOCK HAMMER



NEW GENERATION FOR ROCK HAMMER

APPLICATION

- Widely applicable to narrow ditch excavation.
- Demolition and renovation, mining and quarrying, various engineering construction.
- Metallurgical industry and other fields.

FEATURE & BENEFITS

- Compact structure without shell, small size, light weight, easy operation, and weight reduced by 40% compared to the same model of box hammer
- Easy to transport and install, limited space, flexible operation
- Optimize fluid dynamics performance, improve structural strength, enhance overall structural stability and reliability
- Anti Blank Strike , high frequency, and strong explosive power
- Centralized lubrication and environmentally friendly channels containing water spray reduce dust, are environmentally friendly, and reduce carbon emissions
- Added oil outlet to prevent misjudgment of faults and facilitate maintenance



SPECIFICATION

MODEL	UNIT	DPARZ55	DPARZ105	DPARZ155	DPARZ205	DPARZ305	DPARZ455	DPARZ555
Weight	Kg	55	96	148	205	300	440	530
Working Flow	L/min	12-25	16-35	30-50	50-80	60-90	80-120	90-130
Working Pressure	Bar	100-150	100-150	90-110	100-120	110-130	120-150	120-150
Frequency	bpm	750-1800	750-2200	850-1900	850-1800	600-1400	550-1200	650-1150
Tool Diameter	mm	40	45	50	65	80	95	100
Tool Working Length	mm	255	250	280	394	400	470	495
Impact Energy	J	110	190	290	600	740	1200	1800
Accumulator Pressure	Bar	40-45	40-45	40-45	40-45	40-45	40-45	40-45
Suitable Excavator	Ton	0.8-1.7	0.8-3.5	1.9-4.5	2.5-6	4.5-9	6.5-13	9-15

* Above specifications are subject to change without prior notice for improvement in quality.



EXPLOSIVE HYDRAULIC BREAKER



A pure liquid explosive hammer that can work in a non compressed state of the drill . A smart hydraulic hammer has been developed by integrating the advantages of existing domestic liquid nitrogen combined hydraulic hammers and European pure hydraulic hammers. It has the high impact force of liquid nitrogen combined hammers and the characteristics of pure hydraulic hammers such as oblique striking, fast frequency, high efficiency, and wide application scenarios. It solves the inertia thinking of traditional hydraulic hammers that only need to press the drill tightly as long as there is an inflated nitrogen chamber to work

FEATURE & BENEFITS

- High efficiency: Compared to ordinary hydraulic hammers of the same model, it has increased by 15-50%
- New Invention :Can be driven empty, no need to tighten the drill , work immediately with oil, and the driver does not need to look for point
- New materials: customized materials, improve service life, exquisite and durable
- New technology: circular design, cryogenic process, scientific weight reduction, oil circuit optimization
- Low investment: Due to high efficiency, it can reduce the cost of excavator investment
- Fast frequency: Unique cylinder design, responsive
- Wide range: special working conditions such as building demolition industry, tunnel excavation, furnace refractory brick demolition, metallurgical industry, etc
- Low failure: 30% reduction in failure rate



SPECIFICATION

MODEL	TOOL DIA (mm)	IMPACT ENERGY (J)	OPERATING WEIGHT (KG)			OPERATING FLU (bar)	OPERATING PRESSURE (l/min)	IMPACT RATE (bpm)	APPLICABLE EXCAVATOR (T)
			Silence	Top	Side				
DPAR-02F	35/40	150	95	68	65	90-120	15-30	900-1500	0.8-2.5
DPAR-03F	45	330		103		90-120	25-50	800-1300	1.2-3.0
DPAR-05F	53/55	500	169	162	150	90-120	25-60	700-1200	2.5-4.5
DPAR-07F	65/70	715	324	264	264	120-150	50-90	600-1000	4-7
DPAR-10F	80	1100		396		130-160	70-100	450-950	6-9
DPAR-12F	85/90	1500	565	492	483	140-170	70-110	500-900	7-14
DPAR-15F	100	2300	875	764	774	160-180	90-120	500-850	10-16
DPAR-20F	127	3000		1039		160-180	100-140	400-750	15-18
DPAR-30F	140/145/150	5800	2000	2100	1920	180-200	150-220	400-600	20-30
DPAR-40F	170	10000		2750		200-250	200-260	250-400	30-45

*Above specifications are subject to change without prior notice for improvement in quality.





APPLICATION

Guardrails, fences, photovoltaic pile driving; Road gravel cleaning; Emergency rescue for the demolition of collapsed houses during earthquakes. Widely applicable for pile driving and demolition in narrow spaces. Geotechnical engineering investigation; Environmental soil investigation; Agricultural soil investigation; Groundwater investigation; Coastal geological survey; Wetland environmental investigation; Tailings pond investigation; Archaeological investigation; Secondary halo sampling in physical and chemical exploration; Soil structure description

FEATURE & BENEFITS

- The design of the switch valve is ingenious, with single person operation and quick response, which can improve rescue efficiency
- The body is light weight and easy to carry. Strict and narrow space, flexible handling
- Shock absorber handle, comfortable to operate, effectively reduces fatigue
- Automatic striking, with almost no recoil, designed for aerial combat, reduces physical exertion, and drives quickly and accurately



FEATURE & BENEFITS

A powerful and portable hydraulic hammer that does not require compression. It is completely independent, easy to move and carry, and does not require maintenance or dragging of hoses. It can be used to drive pipeline and pile operations in a shorter amount of time with less physical effort. At the same time, it can efficiently perform crushing operations in small spaces by a single person.



SPECIFICATION

MODEL	UNIT	DPARH80F	DPARH120F	DPARH150F	DPARH02F
Weight	Kg	18	25	31	33
Working Flow	L/min	10-15	15-25	20-30	20-30
Working Pressure	Bar	90-120	90-120	90-120	90-120
Frequency	bpm	1000-2000	950-1850	900-1500	900-1500
Tool Diameter	mm	25	30	35	35
Impact Energy	J	80	120	150	150
Nitrogen Pressure	mm	15-18	15-18	15-18	15-18
Port Size	mm	G3/8	G3/8	G3/8	G3/8

* Above specifications are subject to change without prior notice for improvement in quality.



APPLICATION

Limestone, Concrete, Asphalt, Quarry and Mining industry, every construction site

FEATURE & BENEFITS

- Minimum noise .
- High productivity compared traditional rock breaker.
- High fuel efficiency.
- Easy maintenance.
- Wear resistant Tooth.
- Optimized design.

Upper, Under Link
Connected with main body and housing, convert the vibration to vertical force.

Hydraulic Motor
Under the cover, There is motor for power supply.

Motor Cover
To improve the serviceability and protect the motor.

Housing
Protects main body and absorbs vibration.

Tooth
It is the tool to break rock made by special wear resistance material.

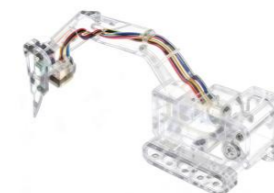
Top Bracket
Connects excavator with Ripper.

Control Valve
Controls flow and pressure supplied from excavator.

IN, OUT Port Inlet/ outlet of oil to motor.

Drain Port
Extra outlet line to prevent motor overload.

Body
Composed eccentric engine, link and Tooth.



Made by wear resistant steel. Compared traditional rock breaker, over 2-4 times higher production and less noise.

Plus, without any option, it can operate under water/sea.

Minimum maintenance cost and Maximum performance will bring the best effect.

SPECIFICATION

DESCRIPTION	UNIT	DPVR800	DPVR1000	DPVR1200	DPVR1400	DPVR1600
Weight	kg	2000	3000	4000	4,500	5,200
Flow	£/min	150-180	150-200	160-200	160-250	180-260
Pressure	bar	20-24	20-24	20-24	21-25	22-26
Frequency	rpm	1,800	1,800	1,700	1,700	1,600
Return Pressure	bar	6	6	6	6	6
Application Excavator	ton	19-24	25-35	35-40	41-50	51-65

* Above specifications are subject to change without prior notice for improvement in quality.

DOPRO AttachMents



QUICK HITCH COUPLER

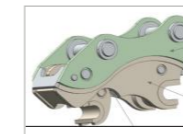


DP Quick Coupler changing buckets or special attachments in a few minutes, usually without tools and without leaving the operator's seat.

Special Features

- Strong & stable compaction
- Compaction ground and slope
- Waterworks and sewer constructions
- Reclamation works of the-gas-pipe and wire
- Wear-proof & one-body design
- Available for wide range of excavators with safety.

The cab is equipped with an electric switch that is convenient for operator operation.



SPECIFICATION

MODEL	UNIT	DPAQ250	DPAQ450	DPAQ500	DPAQ600	DPAQ700	DPAQ900	DPAQ1000
Length (C)	mm	360~475	535~545	600	820	944~990	1040	1006~1173
Height (G)	mm	250-300	307	320	410	520	600	630
Width (B)	mm	175-242	258~263	270~350	365~436	449~483	480~540	550~660
Pins Center Distance (D)	mm	85~200	220~270	290~360	360~420	430~520	450~560	500~660
Arm Width (A)	mm	90~150	155~170	180~230	220~315	300~350	350~410	370~480
Pin Diameter	mm	25~40	45~50	50~55	60~70	70~80	90	100~120
Vertical Pins Center Distance	mm	159	195	195	220	275	300	360
Weight	kg	45	70	80	180	350	550	750
Working Pressure	kg/cm ²	40~100	40~100	40~100	40~100	40~100	40~100	40~100
Necessary Flow	L/min	10~20	10~20	10~20	10~20	10~20	10~20	10~20
Suitable Excavator	ton	1~4	5~6	7~9	10~17	18~24	25~32	33~45

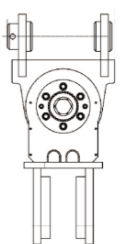
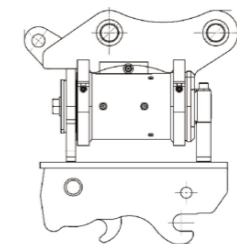
TILTING QUICK HITCH COUPLER



DP Tilting Quick Hitch Coupler changing buckets or special attachments in a few minutes, usually without tools and without leaving the operator's seat.

Special Features

- Q355 material, high strength
- Tilt cylinder with higher torque, safety design;
- Max tilt degree 180°, working under special conditions
- High-wear resistance material



SPECIFICATION

DESCRIPTION	UNIT	DPATQ200	DPATQ400	DPATQ600	DPATQ800	DPATQ1000	DPATQ1200
Applicable Excavator	ton	1~3	4~9	10~17	18~24	25~32	33~45
Operating Weight	kg	160	180	400	450	650	800
Tilt Degree		180°	180°	134°	134°	134°	134°
Working Pressure	bar	210	210	210	210	210	210
Working Flow	l/min	6-12	12-20	24-28	24-32	32-44	44-50

* Above specifications are subject to change without prior notice for improvement in quality.

S HITCH COUPLER



DP renowned for Original couplers, is taking a new step forward by launching its latest innovation: the S+ coupler range. Specifically designed for hydraulic excavators weighing 1 to 26 tons and compatible with tools equipped with axes to the "S" standard, these new couplers represent the result of intensive work focused on innovation and performance

Special Features

PRODUCT

For carriers from 1 to 26t



- Versatile: The S connector ensures the interchangeability of attachments among a group of machines with different platforms. Consistent tight fit, low offset, and reliability are key features.
- Cover: Casting shell, with a simple structure and extremely compact height.
- Hydraulic Cylinder :The integrated oil cylinder assembly component has strong locking force, stable safety latch, and can be disassembled as a whole, Easy to maintain.
- Front safety lock :If the suspension of the fixed tiger mouth double spring safety lock hook fails, you can also grip the accessory tightly.



SPECIFICATION

MODEL	UNIT	DPASQ30	DPASQ40	DPASQ45	DPASQ50	DPASQ60	DPASQ70	DPASQ80
Carrier	ton	0-2	2-6	5-12	5-12	12-20	18-33	30-43
Diameter	mm	25-35	35-45	45-60	45-60	60-80	60-90	90-110
Hook Load Capacity	T	1	1	2	2	3	5	5
Operating Pressure	bar	25-250	25-250	25-250	25-250	25-250	25-250	25-250
Operating Flow	lpm	10-20	10-20	10-20	10-20	10-20	10-20	10-20
Capture Range	mm	230	300	430	430	480	600	670
Axis Distance	mm	85-150	160-270	220-365	250-380	330-435	400-520	385-585
Up Shift	mm	180	198	290	270	340	450	590
Down Shift	mm	125	160	225	202	300	412	480
Equipment weight	Kg	22	30	84	87	125	256	490

* Above specifications are subject to change without prior notice for improvement in quality.



TILTROTATOR



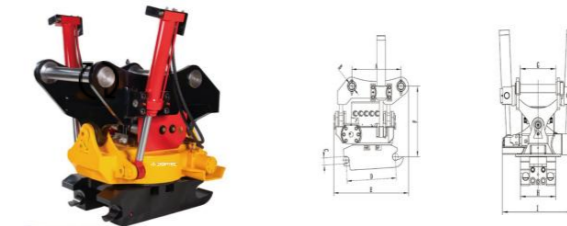
DP Tiltrotator ecosystem already covers road surface repair, landscaping, road slopeprotection, municipal pipelines, interior decoration, river channel improvement, infrastructure port loading and unloading, and other fields. With dozens of tools available under the tiltrotatorwe provide better options for construction, improving efficiency, reducing costs, and ensuring safety. customers can select the corresponding tiltrotator module based on their own working conditions, providing a one-stop solution for your construction pain points.

PRODUCT



Special Features

- Quickly switch attachments
- The attachment can achieve 360° rotation and + 40-90° swing
- The hydraulic circuit can be automatically connected
- Compatible with excavators ranging from 1 to 30 tons



SPECIFICATION

MODEL	UNIT	DPAHT200	DPAHT400	DPAHT600	DPAHT800	DPAHT1000
Applicable Excavator	Ton	3-7	7-12	12-16	17-22	23-28
Weight	Kg	188	315	554	790	960
Pin Dia	mm	40	50	60	70	80
Rotation	Output Torque(N.m)	3600	8000	9800	10800	13500
	Angle(°)	±360°				
	Time(s)	7				
Tilt	Flow Rate(L/min)	25-40	40-50	60-80	70-80	80-100
	Swing Torque(N.m)	4500	9000	13000	18000	25000
	Angle(°)	±40°				
Working Pressure	Bar	18-21	18-21	18-21	18-21	18-21
	l/min	30-80	30-80	40-120	50-140	60-160

SPECIFICATION



MODEL	UNIT	DPAHTG200	DPAHTG400	DPAHTG600	DPAHTG800
Applicable Excavator	Ton	3-7	7-12	12-16	17-22
Weight	Kg	40	46	75	110
Max Lifting Capacity	mm	40	50	60	70

* Above specifications are subject to change without prior notice for improvement in quality.



AU COMPACTOR

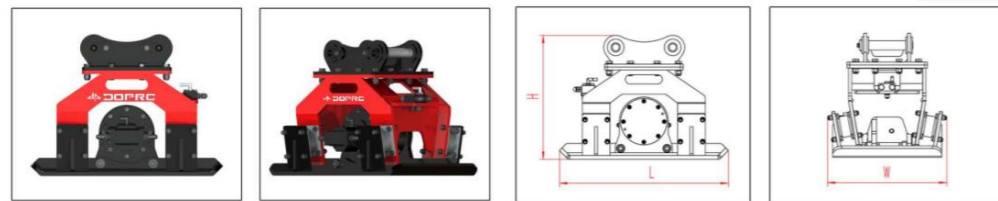
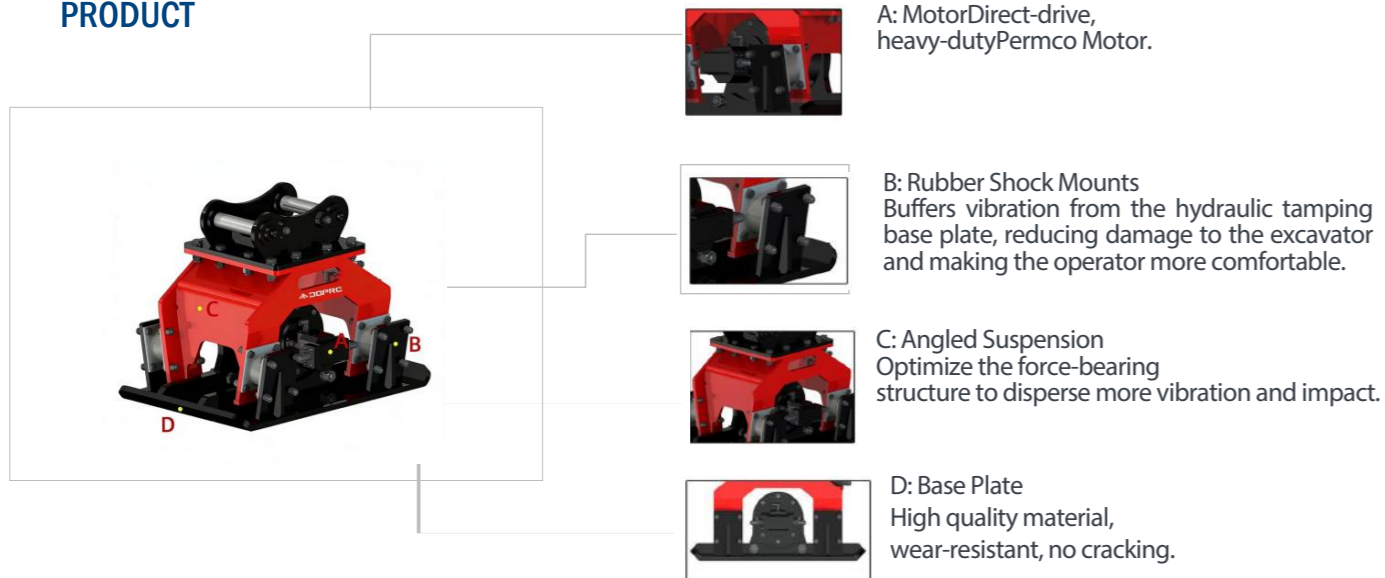


DP AU Hydraulic Compactor provide superior compaction force in a reliable, low-maintenance package. This attachment is the ideal tool when it comes to compaction of soil in trenches, drive sheeting or posts, foundations and slope applications.

Special Features

- Strong & stable demolition power
- Automatic rotational positioning with hydraulic motor
- 360° Rotating system
- High-wear resistance material

PRODUCT



SPECIFICATION

MODEL	UNIT	DPAUT200	DPAUT400	DPAUT600	DPAUT800	DPAUT1000
Carrier	ton	2-4	4-10	12-16	18-24	30-40
Operating Pressure	bar	100-250	100-250	100-250	150-250	150-250
Operating Flow	L/min	30-60	45-85	85-105	120-170	120-170
Impact Rate	rpm/min	2000	2000	2000	2200	2200
Impact Force	ton	3	4	6.5	11	15
Size	mm	550*450	800*590	915*700	1300*900	1500*1000
Length L	mm	620	912	1050	1400	1600
Width W	mm	450	637	720	980	1000
Height H	mm	648	670	818	1012	1020
Equipment weight	Kg	200	372	560	930	1090

* Above specifications are subject to change without prior notice for improvement in quality.



COMPACTOR



DP Hydraulic Compactor provide superior compaction force in a reliable, low-maintenance package. This attachment is the ideal tool when it comes to compaction of soil in trenches, drive sheeting or posts, foundations and slope applications.

Special Features

- Strong & stable demolition power
- Automatic rotational positioning with hydraulic motor
- 360° Rotating system
- High-wear resistance material

PRODUCT



SPECIFICATION

MODEL	UNIT	DPAT400	DPAT600	DPAT800	DPAT1000
Impulse Force	Ton	4	6.5	15	15
Vibration Frequency	Rpm	2000	2000	2000	2000
Oil Flow	L/min	45~75	85~105	120~170	120~170
Operating Pressure	kg/cm ²	100~130	100~130	150~200	150~200
Weight	kg	300	500	900	950
Height	mm	760	920	1060	1100
Width	mm	550	700	900	900
Suitable Excavator	ton	4-9	10-17	18-24	25-32

* Above specifications are subject to change without prior notice for improvement in quality.



HYDRAULIC SCRAP SHEAR



DP Hydraulic Scrap shear are excavator-mounted attachments to cut H-beams and any type of scraps.

Special Features

- Strong & stable cutting force
- 360° Rotating system (Free/Hydraulic)
- High-wear resistance jaw plate
- High-wear resistance cutting blade

PRODUCT



It adopts strong sheet material, with high strength, light dead weight and large shear force.

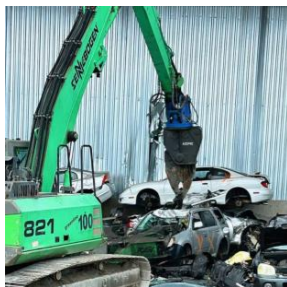
The included angle design can more easily hook the material, the sharp knife straightly cuts off the structural steel.

Applicable to dismantling of steel structure facilities such as heavy-duty vehicle dismantling, steel ship dismantling and bridge dismantling.

SPECIFICATION

DESCRIPTION	UNIT	DPAH400	DPAH600	DPAH800	DPAH1000	DPAH1200
Applicable Excavator	ton	4~9	10~17	18~24	25~32	33~45
Length	mm	1700	1900	3169	3798	3848
Width	mm	350	435	720	812	922
Oil Flow	l/min	80-100	90-110	120-150	180-190	200-250
Working Pressure	kg/cm ²	250-300	250-300	320-350	320-350	320-350
Equipment Weight	kg	680	1288	2148	3800	5600

Hydraulic Car Scrap Shear



DP Hydraulic Car Scrap Shear used to split scraped vehicle and steel

Special Features

- Use high level wear-resisting plate steel, durable in use
- High level machining precision and high breaking capacity.
- High quality blade
- Customization of 360° rotating function..



DESCRIPTION	UNIT	DPACS600	DPACS800	DPACS1000
Applicable Excavator	ton	10~17	18~24	25~32
Length	mm	2020	2530	2950
Width	mm	650	820	950
Oil Flow	l/min	180-190	200-240	230-260
Working Pressure	kg/cm ²	250	280	249
Equipment Weight	kg	890	1195	1700

CRUSHER



DP Hydraulic Crusher are excavator-mounted attachments to crush, demolish, break and handle old concrete.

Special Features

- Strong & stable compaction
- Waterworks and sewer constructions.
- 360° Rotating system
- High-wear resistance cutting blade

PRODUCT

The structure is optimized by design and some models have large shear.



The adoption of special slewing support provides stable performance.

SCRAP STEEL

MODEL	UNIT	DPAC600	DPAC800	DPAC1000	DPAC1200
Weight	kg	1413	2200	2977	4052
Max Opening	mm	540	800	860	801
Height	mm	2050	2380	2600	2700
Width	mm	1175	1370	1600	1700
The Active Length of Blade	mm	348	486	578	736
Rotation Mode		360° Hydraulic			
Pressure	bar	300	320	320	320
Suitable Excavator	ton	10-17	18-24	25-32	33-45

The Crusher uses imported steel material, with double-layer wear resisting protection, high strength and long service life.



The adoption of special slewing support provides stable performance.

TWO OPTION: Teeth replaceable or non replaceable

CONCRETE

MODEL	UNIT	DPAC600C	DPAC800C	DPAC1000C	DPAC1200C
Weight	kg	1480	2000	2200	3052
Max Opening	mm	572	766	800	1000
Height	mm	1800	2080	2180	2500
Oil Pressure	bar	280	300	1540	1700
Oil Flow	L/min	200	240	320	320
Rotation Mode		360° Hydraulic			
Suitable Excavator	ton	10-17	18-24	25-32	33-45

* Above specifications are subject to change without prior notice for improvement in quality.

PULVERIZER



DP Hydraulic Pulverizer are excavator-mounted attachments for main demolition work and secondary crushing work to reduce any shrapnel.

Special Features

- Strong & stable demolition power
- Automatic rotational positioning with hydraulic motor
- 360° Rotating system
- High-wear resistance material

PRODUCT



It is used for secondary crushing of steel and concrete and separation of steel and concrete.



It has the unique layout design of the jaw teeth, with double layer wear resistance protection, and is made of imported sheet material.

The structure is optimized through load design to balance the opening size and crushing force.

FIXED

DESCRIPTION	UNT	DPAP400	DPAP600	DPAP800	DPAP1000	DPAP1200
Applicable Excavator	ton	4~9	10~17	18~24	25~32	33~45
Operating Weight	kg	650	900	1530	1700	1800
Overall Length(L)	mm	1700	1973	2345	2500	2700
Jaw Opening	mm	640	740	835	980	1050
Force at Mid	ton	60	80	100	150	200
Operating Pressure	bar	220	220	240	240	240
Setting Pressure	bar	300	320	320	320	320
Rotation Type		Fixed				



ROTATRY 360°

DESCRIPTION	UNT	DPARP400	DPARP600	DPARP800	DPARP1000	DPARP1200
Applicable Excavator	ton	4~9	10~17	18~24	25~32	33~45
Operating Weight	kg	700	1300	2460	2600	2700
Overall Length(L)	mm	1000	2300	2426	2526	2650
Jaw Opening	mm	500	600	800	900	1050
Force at Mid	ton	60	80	100	150	200
Operating Pressure	bar	220	220	240	240	240
Setting Pressure	bar	300	320	320	320	320
Rotation Type		360 Degree Rotary				

*Above specifications are subject to change without prior notice for improvement in quality.



BUCKET GRAPPLE

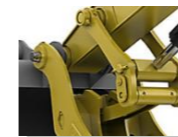


DP Bucket Grapple are excavator-mounted attachments for loading scrap, garbage, debris and concrete structure.

Special Features

- Main bucket design plused arm
- Strong & stable loading work
- Used in a variety of work applications
- Flexible design on job requirement

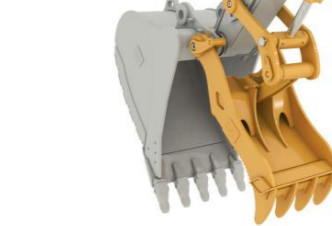
PRODUCT



360° Hydraulic rotating system



High-wear resistance material



Interchangeable tooth

SPECIFICATION

DESCRIPTION	UNIT	DPAU200	DPAU400	DPAU 600	DPAU 800	DPAU1000
Applicable Excavator	ton	1~4	5~9	10~17	18~24	25~32
	lbs	8,818~13,228	15,432~24,251	26,455~35,274	35,479~50,706	52,911~66,139
Operating Weight	kg / lbs	310 / 683	390 / 860	740 / 1,631	940 / 2,072	1,490 / 3,285
Max.Jaw Opening	mm / inch	1,200 / 47.24	1,200 / 47.24	1,600 / 62.99	2,062 / 81.18	2,062 / 81.18
Oil Pressure	bar / psi	110~140 /	120~160 /	150~170 /	160~180 /	160~180 /
		1,595~2,031	1,740~2,321	2,176~2,466	2,321~2,611	2,321~2,611
Setting Pressure	bar / psi	170 / 2,466	180 / 2,611	190 / 2,756	200 / 2,900	210 / 3,046
Operating Flux	lpm	30~55	50~100	90~110	100~140	130~170
Cylinder Volume	ton / lbs	5.4 / 11,904	5.4 / 11,904	8.2 / 18,078	10 / 22,046	12 / 26,455

Hydraulic Magnet Pulverizer



Hydraulic Magnet Pulverizer are designed on the basis of hydraulic Pulverizer in addition to its specific characteristics, the electro magnet uses strong magnetic force to easily absorb fine and difficult to pick steel bars ,which increases efficiency and creates greater value.

Special Features

- Crushing and iron absorption in one machine
- Strong magnetic kinetic energy continues
- Just plug in a 24V battery
- The crushing teeth are sharp and the crushingforce is strong



MODEL	UNIT	DPAHP600	DPAHP800
Suitable Excavator	ton	13-20	20-25
Length	mm	1900	2045
Max Opening	mm	650	760
Hydraulic pressue	mpa	32	32
Magnetic Working Voltage	V	24	24
Limit Adsorption Weight	kg	500	600

* Above specifications are subject to change without prior notice for improvement in quality.

WOOD GRAPPLE



DP Wood Grapple are excavator-mounted attachments to load bulk logs and H-beams.

Special Features

- Strong & stable holding work
- Waterworks and sewer constructions
- 360° Rotating system
- High-wear resistance material

1. 360 degree hydraulic rotation makes it more flexible grabbing effect.
2. The built-in balancing valve of the oil cylinder makes the operation smooth and maintains clamping force, thus providing higher safety.
3. The two-way overflow valve and the two-way balance valve of the motor can protect it from the impact of hydraulic pressure.

PRODUCT



1. Simple structure, light weight and high grasping force.
2. The connecting rod ensures the synchronization of two grabs.
3. The built-in balancing valve of the oil cylinder makes the operation smooth and maintains clamping force, thus providing higher safety.

DOUBEL CYLINDER

MODEL	UNIT	DPAWD400	DPAWD600	DPAWD800	DPAWD1000
Weight	kg	440	880	1700	2000
Opening Size	M/m	1300	1400	1800	2300
Working Pressure	kg/cm ²	110~140	120~160	150~170	160~180
Setting Pressure	kg/cm ²	170	180	190	200
Working Flow	LPM	30~55	50~100	90~110	100~140
Oil Cylinder Capacity	ton	4.0x2	4.5x2	8.0x2	9.7x2
Suitable Excavator	ton	5~9	10~17	18~24	25~32

SINGLE CYLINDER

MODEL	UNIT	DPAWS400	DPAWS600	DPAWS800	DPAWS1000
Weight	kg	4200	800	1680	1980
Opening Size	M/m	1300	1400	1800	2300
Working Pressure	kg/cm ²	110~140	120~160	150~170	160~180
Setting Pressure	kg/cm ²	170	180	190	200
Working Flow	LPM	30~55	50~100	90~110	100~140
Oil Cylinder Capacity	ton	4.0x2	4.5x2	8.0x2	9.7x2
Suitable Excavator	ton	5~9	10~17	18~24	25~32

* Above specifications are subject to change without prior notice for improvement in quality.



PILE HAMMER



DP Pile hammer is a heavy construction equipment that is designed and engineered to drive piles into the ground to set a deep foundation and other related construction projects. Setting piles into the soil requires a rapid number of downward blows and impacting jaws to grip and position the piles into the ground through pile driving equipment.

Special Features

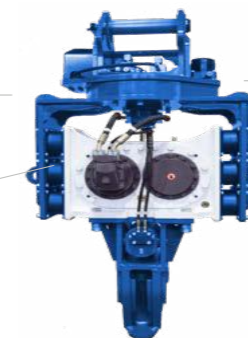
- Easily removable and detachable as well.
- Proven economic feasibility, highest mobility and safety.
- Superhigh frequency vibration and strong centrifugal force for excellent anti-hitting/personality.
- Effective anti/personnel operations such as seat files, tubes, H-beams, etc.
- High-efficiency equipment without outstanding workability and need for separate power packs. Extended product life with specially designed bearings for high-speed vibration.
- Easy installation using hydraulic breaker line of excavator.



Special bearing can endure at high speed rotation.

PRODUCT

Low maintenance cost compared crane. Superior mobility at narrow space.



Using excavator oil, no required extra power source. Rotates 360 degree.

Proven high quality rubber absorb vibration.



SPECIFICATION

MODEL	UNIT	DPAPH800	DPAPH1000	DPAPH1200
Weight	kg	2900	3200	3800
Flow	L/min	250	250	300
Pressure	kg/cm ²	320	320	320
Frequency	rpm	3,000	2,800	2,800
Eccentric Moment	nm	36	50	70
Application Excavator	ton	20-30	30-40	40-50

* Above specifications are subject to change without prior notice for improvement in quality.

COTTON GRAPPLE



DP Specially designed for loading, unloading, and handling small types of wood such as weeds, straw, and fine wood

Special Features

- Made of Q345 manganese plate steel, with high strength and wear resistance
- The shaft is made of 42CrMO alloy steel, which has high strength and good toughness;
- Adopting imported rotary motors;
- The oil cylinder adopts honing tube and imported seal, with short working cycle and long service life
- Connecting rod design, lightweight, flexible operation.

LOG GRAB



Product Introduction

DP Log Grab is used to carry wood, High reliability with high strength and wear resistant materials. Heated bushings are inserted into all pinholes to increase the wear resistance of the pinholes to extend the life of the equipment.

PRODUCT



Possible to rotate by 360 ° forward / reverse rotation by hydraulic motor and fixed way is also possible.



The high pressure hose and the cylinder are combined inside to minimize the damage caused by the external environment.

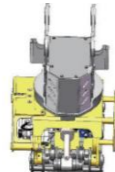


When the legs were opened and closed, the STOPBAR was installed to stabilize the cylinder.



SPECIFICATION

MODEL	DPAL400	DPAL600	DPAL800	DPAL1000	DPAL1200
WEIGHT(kg)	400	900	1300	1700	2000
MIN	100	280	310	340	566
MAX	1196	1709	1750	1880	2250
H	675	1175	1244	1370	1846
H1	397	741	778	1262	1550
TON	4~9	10~17	18~24	25~32	33~45



Log Grab with Saw

MODEL	DPALS400	DPALS600	DPALS800	DPALS1000	DPALS1200
WEIGHT(kg)	400	900	1300	1700	2000
MIN	100	280	310	340	566
MAX	1196	1709	1750	1880	2250
H	675	1175	1244	1370	1846
H1	397	741	778	1262	1550
TON	4~9	10~17	18~24	25~32	33~45

* Above specifications are subject to change without prior notice for improvement in quality.

CLAM SHELL BUCKET



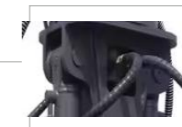
Product Introduction

DP Clam Shell Bucket is High reliability with high strength and wear resistant materials. Heated bushings are inserted into all pinholes to increase the wear resistance of the pinholes to extend the life of the equipment, and A type and B type can be selected according to the ease of work. also, can be installed on hoist crane.

PRODUCT



Possible to rotate by 360 ° forward / reverse rotation by hydraulic motor and fixed way is also possible.



Cylinder ROD guards installed.



Connect the two BUCKETS with LINK BAR to show the same movement at the same time.

ROTATRY 360°

MODEL	DPARB400	DPARB600	DPARB800	DPARB1000	DPARB1200
CAPA(LT.)	400	600	800	1000	1200
WEIGHT(kg)	300	560	720	980	1200
MIN	893	1032	1752	1752	1856
MAX	1342	1532	2223	2223	2328
H	1154	1302	2200	2200	2253
H1	917	1091	1408	1408	1408
L	350	550	600	800	900
TON	4~9	10~17	18~24	25~32	33~45



FIXED

MODEL	DPAB400	DPAB600	DPAB800	DPAB1000	DPAB1200
CAPA(LT.)	400	600	800	1000	1200
WEIGHT(kg)	300	560	720	980	1200
MIN	893	1032	1752	1752	1856
MAX	1342	1532	2223	2223	2328
H	1154	1302	2200	2200	2253
H1	917	1091	1408	1408	1408
L	350	550	600	800	900
TON	4~9	10~17	18~24	25~32	33~45

* Above specifications are subject to change without prior notice for improvement in quality.

ORANGE PEEL GRAPPLE



Product Introduction

DP ORANGE PEEL Grapple is High reliability with high strength and wear resistant materials. Heated bushings are inserted into all pinholes to increase the wear resistance of the pinholes to extend the life of the equipment.

PRODUCT



Possible to rotate by 360 ° forward / reverse rotation by hydraulic motor and fixed way is also possible.

Cylinder guards installed.



It can be replaced by Tooth.



ROTARY 360°

MODEL	DPAO400	DPAO600	DPAO800	DPAO1000	DPAO1200
CAPA(LT)	400	600	800	1000	1500
WEIGHT(kg)	1000	1200	1560	1800	2200
MIN	850	928	961	1198	1376
MAX	1500	1774	1945	2178	2513
H	1235	1535	1647	1863	2081
H1	1100	1304	1392	1600	1793
TON	4~9	10~17	18~24	25~32	33~45



FIXED

MODEL	DPAO400	DPAO600	DPAO800	DPAO1000	DPAO1200
CAPA(LT)	400	600	800	1000	1500
WEIGHT(kg)	1000	1200	1560	1800	2200
MIN	850	928	961	1198	1376
MAX	1500	1774	1945	2178	2513
H	1235	1535	1647	1863	2081
H1	1100	1304	1392	1600	1793
TON	4~9	10~17	18~24	25~32	33~45

* Above specifications are subject to change without prior notice for improvement in quality.

SORTING GRAB



Product Introduction

DP Sorting Grab is installed on fork cranes and cranes. It is hydraulically moved to transport and load stones and steel. High strength and wear resistant material gives high reliability. Heated bushing is inserted in all pinholes to increase the wear resistance of the pin holes, extending the life of the equipment.

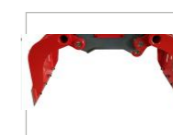
PRODUCT



The high pressure hose and the cylinder are combined inside to minimize the damage caused by the external environment.



Possible to rotate by 360 ° forward / reverse rotation by hydraulic motor and fixed way is also possible.



When the legs were opened and closed, the STOPBAR was installed to stabilize the cylinder. It can be replaced by Tooth.



SPECIFICATION

MODEL	DPAS400	DPAS600	DPAS800	DPAS1000	DPAS1200
WEIGHT(kg)	664	1036	1600	2200	2300
MOTOR OIL FLOW (l/min)	15-18	16-22	20-25	25-30	30-35
MAX OPENING(mm)	1700	2100	2400	2600	2700
HEIGHT(mm)	1350	1550	1650	1785	1800
WIDTH(mm)	900	1000	1200	1300	1400
CLYINDER OIL FLOW (l/min)	150-170	180-200	200-240	200-240	220-240
TON	4~9	10~17	18~24	25~32	33~45

HYDRAULIC CLAMP FOR BRICK



DP Specially designed for brick factories, construction sites, and other brick material loading and unloading operations

Special Features

- Made of Q345 manganese plate steel, with high strength and wear resistance
- The shaft is made of 42CrMO alloy steel, which has high strength and good toughness;
- Adopting imported rotary motors;
- The oil cylinder adopts honing tube and imported seal, with short working cycle and long service life
- Fixed axis design, sturdy and durable.

RIPPER



DP Ripper are excavator-mounted attachments for ripping hard object.

Special Features

- Strong & stable loading work
- Suitable for excavator or crane
- 360° Hydraulic rotating system
- High-wear resistance material
- Simple structure, light weight.

PRODUCT



DP ripper is the quality of high strength manganese steel processing produced by selection, As high efficiency and durability, applicable to all kinds of tonnage excavator's assembly requirement.

Suitable for loose and hard soil layer, frozen ground, soft rock, weathered rock etc.

It is very convenient for after work digging and loading as high efficiency, it is the most convenient & efficient non-blasting breaking construction way here and now.



SPECIFICATION

MODEL	UNIT	DPAR200	DPAR400	DPAR600	DPAR800	DPAR1000	DPAR1200
Suitable Excavator	ton	1~4	5~9	10~17	18~24	25~32	33~45
Overall Width	mm	270	320	410	4696	560	680
Overall Length	mm	700	1000	1300	1460	1650	1600
Height (C)	mm	380	420	570	668	735	790
Pin Diameter (D)	mm	40~50	50~55	60~70	70~80	80~90	90~120
Open Width (E)	mm	150~180	180~200	200~315	300~350	360~420	400~460
Weight	kg	50	80	280	400	550	900

CLEANING BUCKET

Applied to ditching, slooping, grading and other cleaning works by large capacity and double cutting



MODEL	UNIT	DPANB400	DPANB600	DPANB800	DPANB1000
Suitable excavator	Ton	5-9T	10-17T	18-24T	25-32T
Pin Distance	mm	310	360	465	530
Width	mm	1200	1500	1800	2000
Pin Diaeter	mm	50-55	60-70	70-80	90
Arm Width	mm	220	260	340	390

* Above specifications are subject to change without prior notice for improvement in quality.



TILT BUCKET



DP Tilt Bucket designed to work for standard ditching, grading and light material loading without excavator moving.

Special Features

- For normal land clearing of clay, sand or other loose material with little or no debris or large rocks; land clearing, rock sorting or green waste disposal and loading
- Light but strong with a large capacity.
- Tilt bucket can change the tilt angle of excavator bucket, don't need to change the location of excavator, reduce mechanical wear and fuel consumption, and improve work efficiency.

PRODUCT



SPECIFICATION

MODEL	UNIT	DPATB200	DPATB400	DPATB600	DPATB800	DPATB1000	DPATB1200
Applicable Excavator	Ton	1-3	4-9	10-17	18-24	25-32	33-45
Weight	kg	350	550	880	950	1380	1600
Volume	m ³	0.20	0.30	0.60	0.75	0.90	1.50
Tilt Degree	°	45°	45°	45°	45°	45°	45°
Working Pressure	Bar	18	21	25	26	26	28
Working Flow	l/min	30-50	50-100	90-110	90-120	100-140	130-170

EXCAVATOR BUCKET

DP Bucket is mainly used for excavation, sand gravel, soil and other light load operating environment;



Rock Bucket is mainly used for mining hard gravel mixed protector with hard soil, hard stone or flint, used for loading in highly abrasive applications such as severe rock.

TRENCHING BUCKET

DUSTPAN BUCKET



NORMAL & ROCK BUCKET



PRODUCT	MODEL	MATERIAL	G.E.T	APPLICATION
Normal Bucket	DPAEB	Q355+NM400	Adapter, Teeth, Side Cutter	Main used for excavation, sand gravel, soil and other light load operating conditions.
Rock Bucket	DPAERB	Q355+NM400	Adapter, Teeth, Side Cutter	Main used for digging hard soil, mixed with a relative soft stone and clay softer stones, and other light load operating conditions.
Trenching Bucket	DPAET	Q355+NM400	Adapter, Teeth, Side Cutter	specifically designed to dig trenches narrower than the width of the quick hitch but deeper than a standard bucket can handle.
Dustpan Bucket	DPAED	Q355+NM400	Adapter, Teeth, Side Cutter	Mainly used for mining hard gravel mixed with hard soil, hard stone or flint. Used for loading in highly abrasive applications such as severe rock.

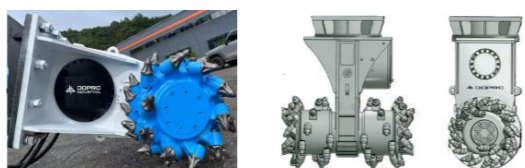
* Above specifications are subject to change without prior notice for improvement in quality.

DRUM CUTTER



- Produce an extremely accurate profile in excavation and tunnelling work or in surface preparation.
- Reuse the finely rained excavated material for backfillin .
- Fewer vibrations reduce fatigue when working.
- Reduce the risk of damage in and around the site.
- Use the cutting units in noise-sensitive zones, as they are relatively quiet to operate.
- The mam components - hydraulic motor inside the drum cutter is produced by ourselves.

PRODUCT



SPECIFICATION

MODEL	UNIT	DPAD200	DPAD400	DPAD600	DPAD800	DPAD1000	DPAD1200
Suitable Excavator	ton	1~3	4~9	10~17	18~24	25~32	33~45
Maximum Input Power	kW	22	44	41	70	110	140
Maximum Flow	Mmin	650	1000	1320	3200	4600	5400
Recommended Flow	Vmin	400	800	1200	2200	3200	3600
Maximum Pressure	bar	400	400	400	400	400	400
Output Shaft Torque	bar	3,750Nm@320	4,288Nm@320	6320Nm@320	14272Nm@320	21,376Nm@320	37830Nm@350
Pdk Force	bar	21,8kNa320	24,9kNa320	26,6kNa320	44,2kNa320	63,2kNa320	104,1kNa350
Output Shaft Speed	Mmin	500rpm@40	95,0rpm@80	95,0rpm@120	780rpm@220	76,0rpm@320	53,0rpm@360
Pd Speed	Vmin	0,9m/s@40	1,7m/s@80	24m/sa120	2,2m/sa220	2,7m/sa320	20m/sa360
Unit Weight	kg	181	1925	595	1.17	1.444	2.458
No. of Pdk	mm Shank	32(19,4)	32(194)	64(19,4)	64(25,4)	60(38/30)	54(38/30)



- Simple installation, convenient operation. low failure rate no noise, meet environmental protection requirements. The excitation coil has been treated with a special process to improve the electrical and mechanical energy of the coil, The heat resistance level of the reinforced material has reached level C, and the service life is longer.

HYDRAULIC MAGNET



MODEL	UNIT	DPAHM600	DPAHM800	DPAHM1000
Overall size	mm	720*1000	1200*1150	1300*1150
Magnetic force	gs	5000	6000(8000)	8000(10000)
Hydraulic pressure	mpa	200	200	200
Oil flow	Lmin	60	60	60
Power	W	10000	15000	20000
Suitable Excavator	ton	10-17	18-24	25-35
Weight	kg	1500	1750	1900

ELETR MAGNET



MODEL	UNIT	DPAEM400	DPAEM600	DPAEM800	DPAEM1000	DPAEM1200
Overall size	mm	200*800	285*1200	285*1300	300*1500	300*1660
Magnetic force	ton	2.5-3	4.5-5.5	5.5-6.5	7.5-11	45880
Electricity	A	18	45	54	65	79
Power	W	4000	9900	11880	15600	16500
Suitable Excavator	ton	5-9	10-17	18-24	25-32	33-45
Weight	kg	600	1450	1950	2580	2650

*Above specifications are subject to change without prior notice for improvement in quality.

SKELETON BUCKET



Skeleton bucket is great for sifting out rocks in soil, effectively mining and sorting rock and removing other debris without the soil. It is available in many different sizes, widths, and even custom rib spacing configurations, too. Widely applied to loose materials in governmental, agricultural, forestry, water conservancy projects.

Support customization based on customers' working environment.

PRODUCT

Fully welded interlocked ribs

Pins included

Longer and stronger hangers



Abrasion resistant steel, durable in use

SPECIFICATION

MODEL	UNIT	DPAKB400	DPAKB600	DPAKB800	DPAKB1000
Suitable Weight	Ton	4-9	10-17	18-24	25-32
Pin Diameter	mm	50	60-65	80	90-100
Pin Distance	mm	310	360	465	530
Width	mm	1200	1500	1800	2000
Arm Width	mm	220	260	340	390

HYDRAULIC THUMB



Make bucket much more functional and keep rocks or other objects from dropping;

Special Features

- Q355 material, high strength;
- Suitable for different bucket, supportive tool, lower cost, high efficiency;
- Easy installation, easy operation;



SPECIFICATION

DESCRIPTION	UNIT	DPAHU200	DPAHU400	DPAHU 600	DPAHU 800
Applicable Excavator	ton	1~4	5~9	10~17	18~24
Length	mm	910	1220	1320	1530
Width	mm	220	300	410	410
Oil Flow	l/min	20-50	30-90	90-110	100-140
Working Pressure	kg/cm ²	90-120	110-160	150-170	160-180
Weight	Kg	90	180	300	440

* Above specifications are subject to change without prior notice for improvement in quality.



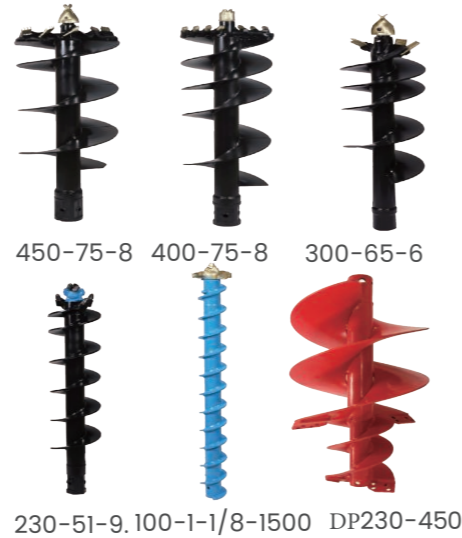
EARTH AUGER



Product Introduction

DP Earth Auger can be mounted to all common hydraulic excavators as well as mini excavators, like skid steer loader and backhoe loader. Auger drive can be applied for ground release drilling, ground investigation, soldier pile installation, displacement augering, injection and soil improvement for foundations.

PRODUCT



450-75-8 400-75-8 300-65-6
230-51-9.100-1-1/8-1500 DP230-450

EXCAVATORS AND LOADERS 1T-5.5T

Scope of application: field, municipal gardens, tree planting, roads.



Type	Excavator	Max Rotate Speed (r/min)	Max Torque (Nm)	Flow Range (L/min)	Max.Pressure (bar)	Output Shaft (mm)	Drilling Diameter Range (mm)
DPAE1000	0.8T-1.5T	72r/min	980Nm	25-75L/m	210Bar	HEX 41mm	50-300mm
DPAE2500	1.5T-2.5T	65r/min	2500Nm	25-75L/m	210Bar	OD 65mm HEX 51mm	100-400mm
DPAE3000	2.5T-3.5T	62r/min	3095Nm	25-75L/m	210Bar	OD 65mm HEX 51mm	100-500mm
DPAE4500	2T-4T	56r/min	4610Nm	25-75L/m	210Bar	OD 65mm HEX 51mm	100-600mm
DPAE5000	4T-5.5T	52r/min	5050Nm	45-95L/m	210Bar	OD 65mm HEX 51mm	100-700mm

EXCAVATORS AND LOADERS 4.5T-9T

Scope of application: Municipal gardens, tree planting, roads, drilling, electric power Engineering, Foundation.



Type	Excavator	Max Rotate Speed (r/min)	Max Torque (Nm)	Flow Range (L/min)	Max.Pressure (bar)	Output Shaft (mm)	Drilling Diameter Range (mm)
DPAE5500	4.5T-6T	48r/min	5560Nm	50-200L/m	240Bar	SQ 75mm	100-750mm
DPAE6000	5T-7T	45r/min	6050Nm	50-200L/m	240Bar	SQ 75mm	100-800mm
DPAE7000	6T-8T	42r/min	7130Nm	50-200L/m	240Bar	SQ 75mm	100-800mm
DPAE8000	7T-9T	40r/min	8060Nm	50-200L/m	240Bar	SQ 75mm	100-900mm

* Above specifications are subject to change without prior notice for improvement in quality.



SPARE PART

WEAR-RESISTANT REPLACEABLE ACCESSORIES FOR DRILLING AUGER



CONNECTING ROD AND BRACKET



EXCAVATOR 8T-20T

Scope of application: Tree planting, road, drilling, Electric power Engineering, Foundation.



Type	Excavator	Max Rotate Speed (r/min)	Max Torque (Nm)	Flow Range (L/min)	Max.Pressure (bar)	Output Shaft (mm)	Drilling Diameter Range (mm)
DPAE10000	8T-12	38r/min	9880Nm	70-200L/m	240Bar	SQ 75mm	100-1000mm
DPAE15000	10T-15T	35r/min	15200Nm	70-200L/m	240Bar	SQ 75mm	100-1200mm
DPAE20000	12T-20T	32r/min	20100Nm	70-200L/m	240Bar	SQ 75mm	100-1200mm

EXCAVATOR 18T-28T

Scope of application: Tree planting, road, drilling, Electric power Engineering, Foundation.



Type	Excavator	Max Rotate Speed (r/min)	Max Torque (Nm)	Flow Range (L/min)	Max.Pressure (bar)	Output Shaft (mm)	Drilling Diameter Range (mm)
DPAE25000	20T-25T	35r/min	24400Nm	80-268L/m	240Bar	SQ 75mm	200-1500mm
DPAE30000	20T-28T	30r/min	30200Nm	80-268L/m	240Bar	SQ 75mm	200-1500mm

EXCAVATORS 30T-90T

Scope of application: Housing Foundation, Highway, drilling, Electric power Engineering, Foundation.



Type	Excavator	Max Rotate Speed (r/min)	Max Torque (Nm)	Flow Range (L/min)	Max.Pressure (bar)	Output Shaft (mm)	Drilling Diameter Range (mm)
DPAE50000	30T-45T	28r/min	51200Nm	100-425L/m	320Bar	SQ 110mm	300-1800mm
DPAE65000	35T-50T	25r/min	65750Nm	120-450L/m	350Bar	SQ 110mm	300-1800mm
DPAE100000	40T-75T	14r/min	108500Nm	150-500L/m	360Bar	SQ 130mm	300-2000mm
DPAE200000	45T-80T	9r/min	228000Nm	180-625L/m	400Bar	SQ 160mm	300-2500mm

* Above specifications are subject to change without prior notice for improvement in quality.

SCREENING BUCKET

CRUSHING BUCKET



Product Introduction

Primary screening of waste materials, demolition materials, excavation and landfill materials, stone recycling, pebble and natural stone cleaning, etc.

- In the quarry, it is used for grading large and small stones and separating soil and stone powder.
- In the coal industry, it is used for separating lump coal from coal powder and washing coal (a component of coal washing machinery);
- The chemical industry and mineral processing industry are used for the classification of large and small block materials and the separation of powdery substances.

Special Features

- The sieve holes are not easily clogged, operate smoothly, and have low noise.
- The structure is simple, easy to maintain, and the screening cylinder is easy to screen. Adopting special sieve mesh, with high screening efficiency and long service life;
- The specifications of the sieve holes can be selected according to the size of the material (10 * 10mm -80 * 80mm), which is easy to replace and greatly reduces machine wear and operation difficulty.

PRODUCT



SPECIFICATION

MODEL	UNIT	DPASB400	DPASB600	DPASB800	DPASB1000
Suitable excavator	Ton	4-9T	10-17T	18-24T	25-32T
Weight	m³	0.4	0.46	1.2	2.4
Capacity	kg	550	620	1100	2400
Screen drum Diameter	mm	600	800	1000	1400
Screen drum Depth	mm	560	644	830	998
Speed	rpm	30	33	60	60
Set up pressure	bar	270	270	270	270
Cylinder Volume	L/min	80	80	80	100

EXCAVATOR RAKE

DP Excavator Rake Cleaning and screening different types and sizes materials



Special Features

- Using high-quality O355 steel to ensure overall strength,
- The sales shaft is made of 42CrMo alloy steel with built-in oil passage, which has high strength and good toughness High quality blade
- Supporting customization



MODEL	UNIT	DPAER200	DPAER400	DPAER600	DPAER800	DPAER1000
Applicable Excavator	ton	1~4	5~9	10~17	18~24	15~32
Weight	Kg	100	360	700	2000	2300
Length	mm	1010	1410	1830	2200	2600
Width	mm	360	485	635	785	945
Oil Flow	l/min	180-190	200-240	180-190	200-240	230-260
Height	kg/cm²	880	1175	1460	1710	2050

* Above specifications are subject to change without prior notice for improvement in quality.



Product Introduction

Widely used in industries such as mining, road maintenance, and construction, for crushing and processing construction waste or materials that are shoveled.

Special Features

- DP crusher has outstanding advantages such as flexible structure, reliable operation, strong adaptability, low cost, and easy maintenance.
- Realize the resource utilization, reduction, and harmlessness of construction waste, save landfill costs, and improve recycling rates.
- Reduce the mining of natural sand and gravel, reduce environmental pollution, and protect natural resources..

PRODUCT



Opening & Production



SPECIFICATION

MODEL	UNIT	DPACB800	DPACB1000	DPACB1200
Suitable excavator	Ton	18-24T	25-32T	33-45T
Weight	kg	1900	3500	4500
Operating Pressure	bar	180-200	180-200	180-200
Operating Pressure	L/min	110-115	150-160	150-160
Height	mm	1290	1430	1480
Width	mm	885	1080	1425
Length	mm	1900	2715	2775

FIAIL MOWER

DP Fiail Mower ,used for Grass,weeds, bushes cutting, ideal for clearing vegetation on hillsides, roadways, ditches, utility right-of-ways,riverbanks,lakes and more.



Special Features

- Chains for grass splashing protecting,
- High quality Blades replaceable:
- Support customization.



MODEL	UNIT	DPAF200	DPAF400	DPAF600	DPAF800
Applicable Excavator	Ton	1-4	5-9	10-17	18-24
Weight	kg	300	400	800	1000
Width	mm	500	600	700	700
Working Pressure	kg/cm²	150-170	150-170	150-170	150-170
Working Flow	l/min	30-40	40-50	50-70	50-80

*Above specifications are subject to change without prior notice for improvement in quality.

THEE ROOT SHEAR

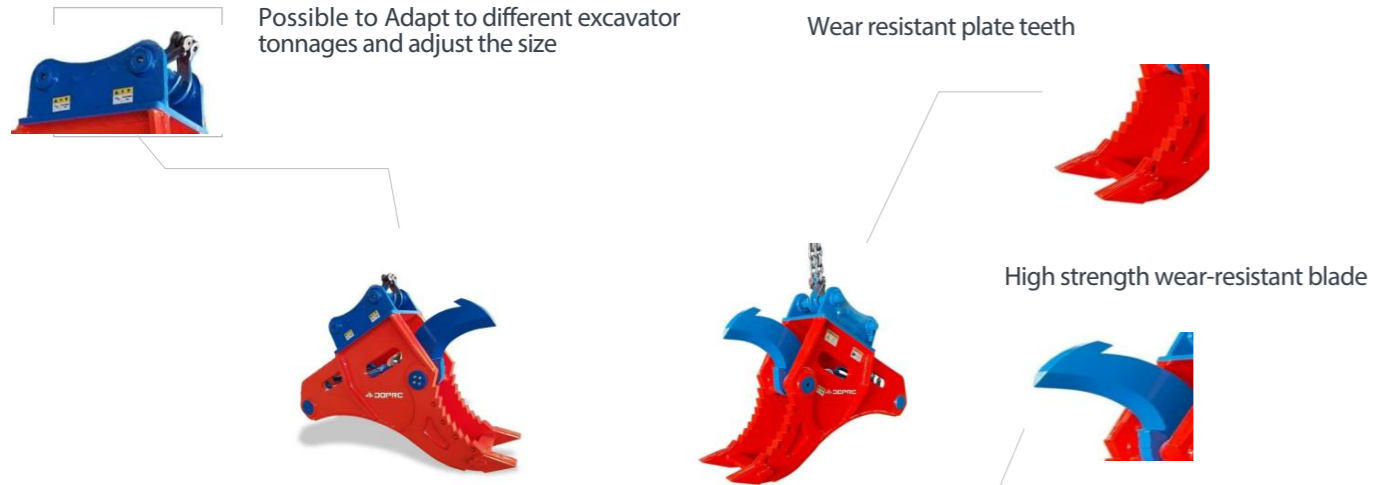


Product Introduction

DP THPEE ROOT SHEAR product Introduction Unlike ordinary hydraulic shears,it can easily cut tree roots with a diameter of 30cm.

- Special Features**
- It is equipped with multiple attachments,and the design is very flexible.
 - Its efficiency is very high,and it adopts mechanized operation,which can save a lot of labor costs.
 - After cutting down trees in forestry or gardens,it is difficult to deal ,with the remaining tree roots. With this artifact,it can easily solve the problem.

PRODUCT



SPECIFICATION

MODEL	UNIT	DPARS600	DPARS800
Excavator weight	ton	5-15	13-25
Working pressure	Mpa	25	35
Shear force	ton	30	60
Maximum opening	mm	600	1050
machine weight	kg	500	1300

* Above specifications are subject to change without prior notice for improvement in quality.



THEE SHEAR

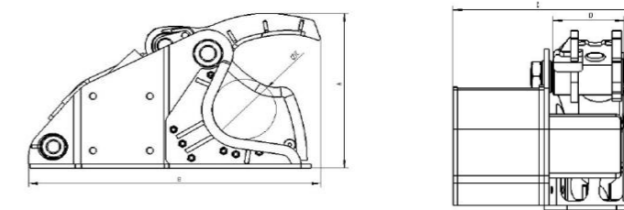


Product Introduction

DP Three Shear Ideal for forestry, landscaping, construction, and agricultural ,king of tree shears, with a strong, proven design for cutting wood of all types, including hardwoods.

Special Features

-
- The main body adopts a horizontal box design. When cutting, using a machine to push can increase the cutting force and make the blade sink more effectively into the tree
 - Customized oil cylinder, providing strong shear force, covering a full range of tree cutting diameters of 150-400mm, very suitable for handling branches, shrubs, and hedges.
 - After heat treatment and quenching, the NM400 bolt fixed blade has high hardness and wear resistance.
 - The bolt fixed replaceable connector can be customized according to size to fit any excavator.



MODEL	UNIT	DPATS150	DPATS200	DPATS300	DPATS400	
Carrier	Ton	0.8-1.8	1.5-5	5-15	10-25	
Operating Pressure	Bar	180-210	180-210	190-230	190-250	
Operating Flow	lpm	10-15	20-25	70-90	110-140	
Size	A(Height)	mm	417	532	801	1078
	B(Length)	mm	707	882	1177	1730
	c(Width)	mm	417	510	777	1020
	D(width)	mm	160	210	329	448
Cutting Diameter E	mm	154	204	304	406	
Weight	Kg	90	158	350	793	

* Above specifications are subject to change without prior notice for improvement in quality.





DO PROFESSIONAL EXCAVATOR ATTACHMENT MANUFACTUER

Factory

Yantai Dopro Industry Technology Co.,Ltd
Address: 108 Yonghe Road, Fushan District, Yantai City ,ShanDong Province , China
Email: info@doproindustrial.com
WebSite: www.rockbreakerhammers.com/ www.attachmentexcavator.com